



Far East Ship Design & Engineering Co., Ltd.

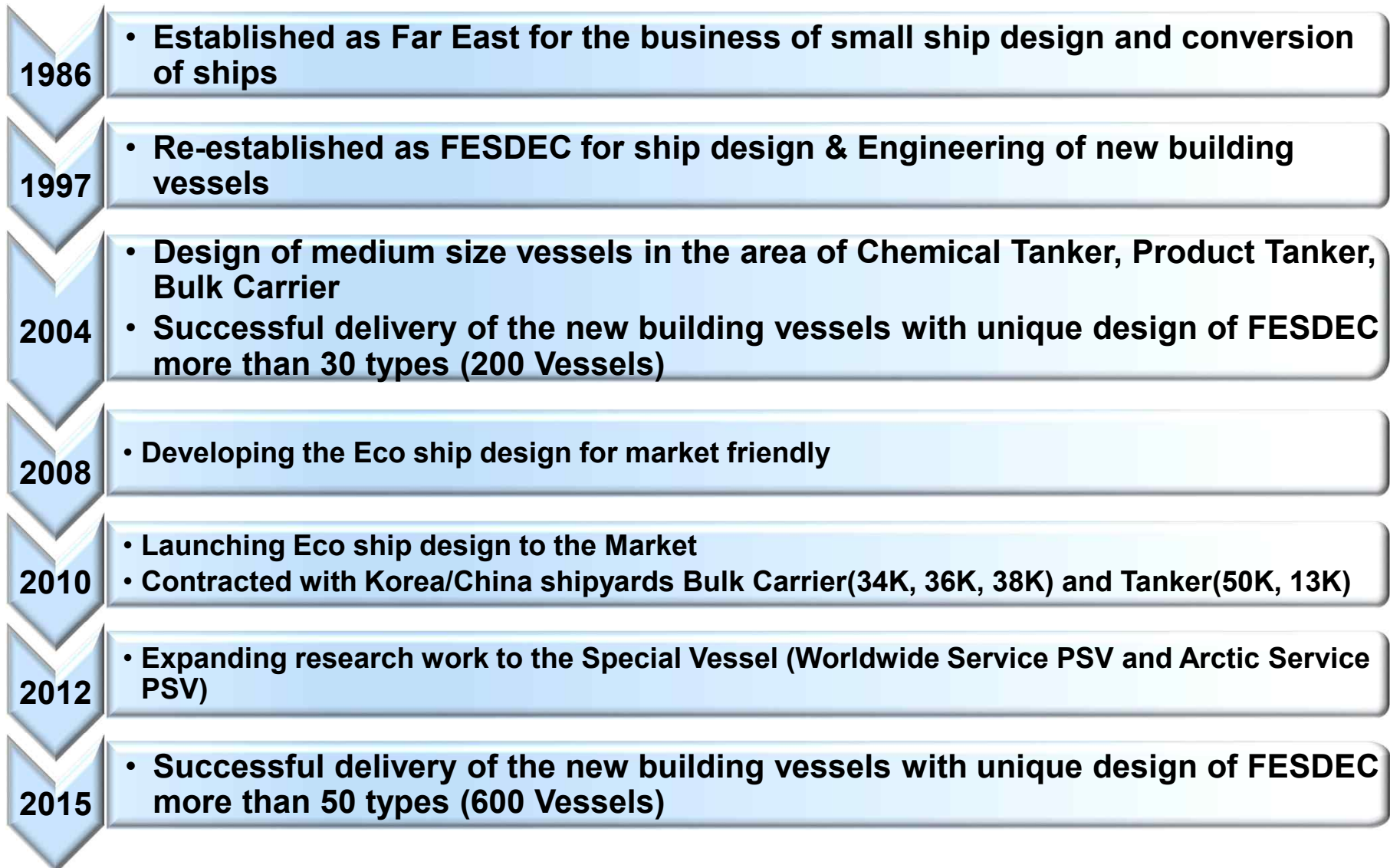
Since 1986

CONTENTS

- 1. INTRODUCTION**
- 2. ORGANIZATION**
- 3. DESIGN PROGRAM**
- 4. FESDEC MAIN PRODUCT**

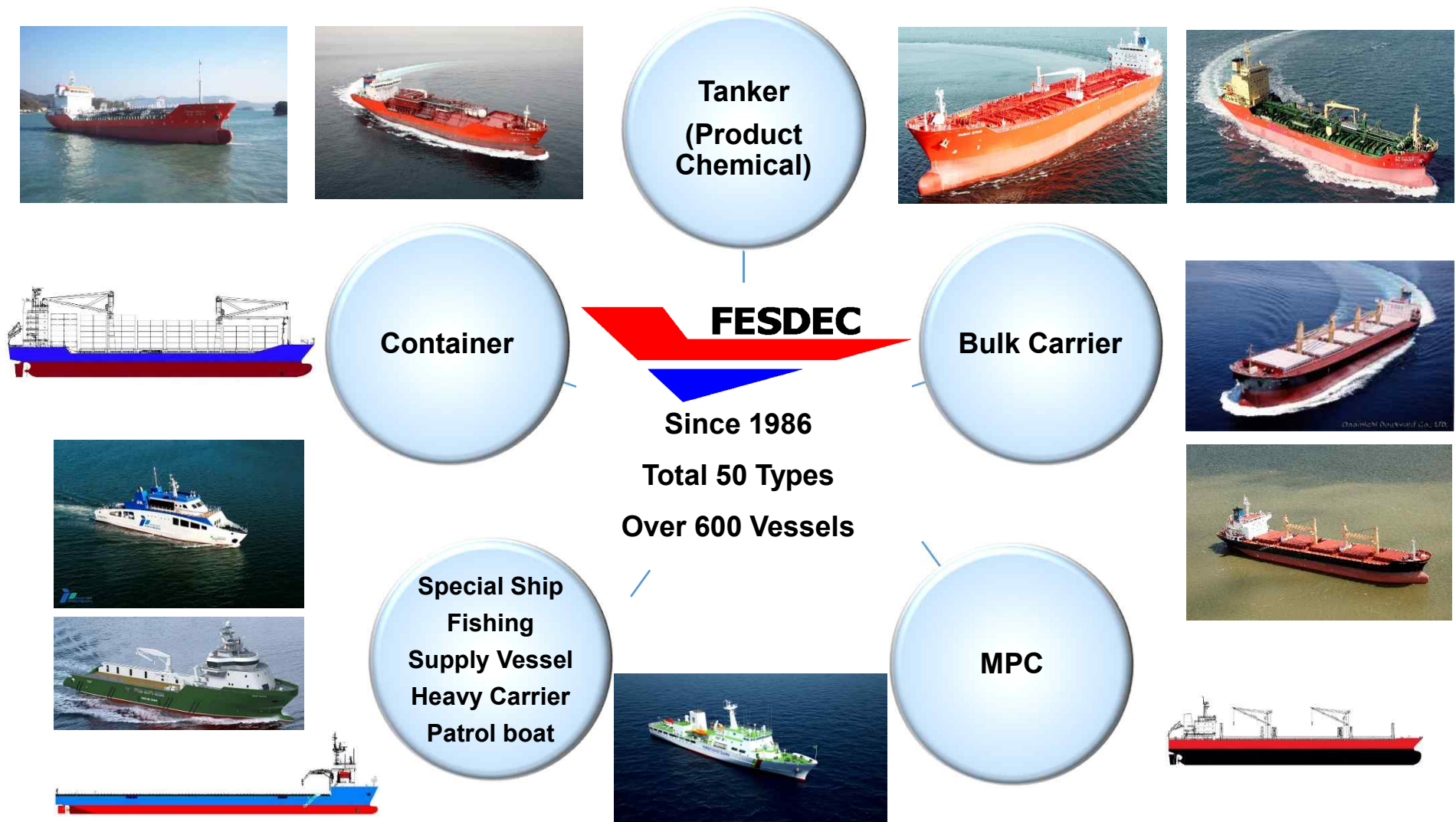
1. INTRODUCTION

1.1 HISTORY OF FESDEC



1. INTRODUCTION

1.2 FESDEC SINCE 1986 (30YRS)



1. INTRODUCTION

1.3 FESDEC SINCE 2010



Since 2010
Eco design
Low Fuel Consumption
LNG Fuel

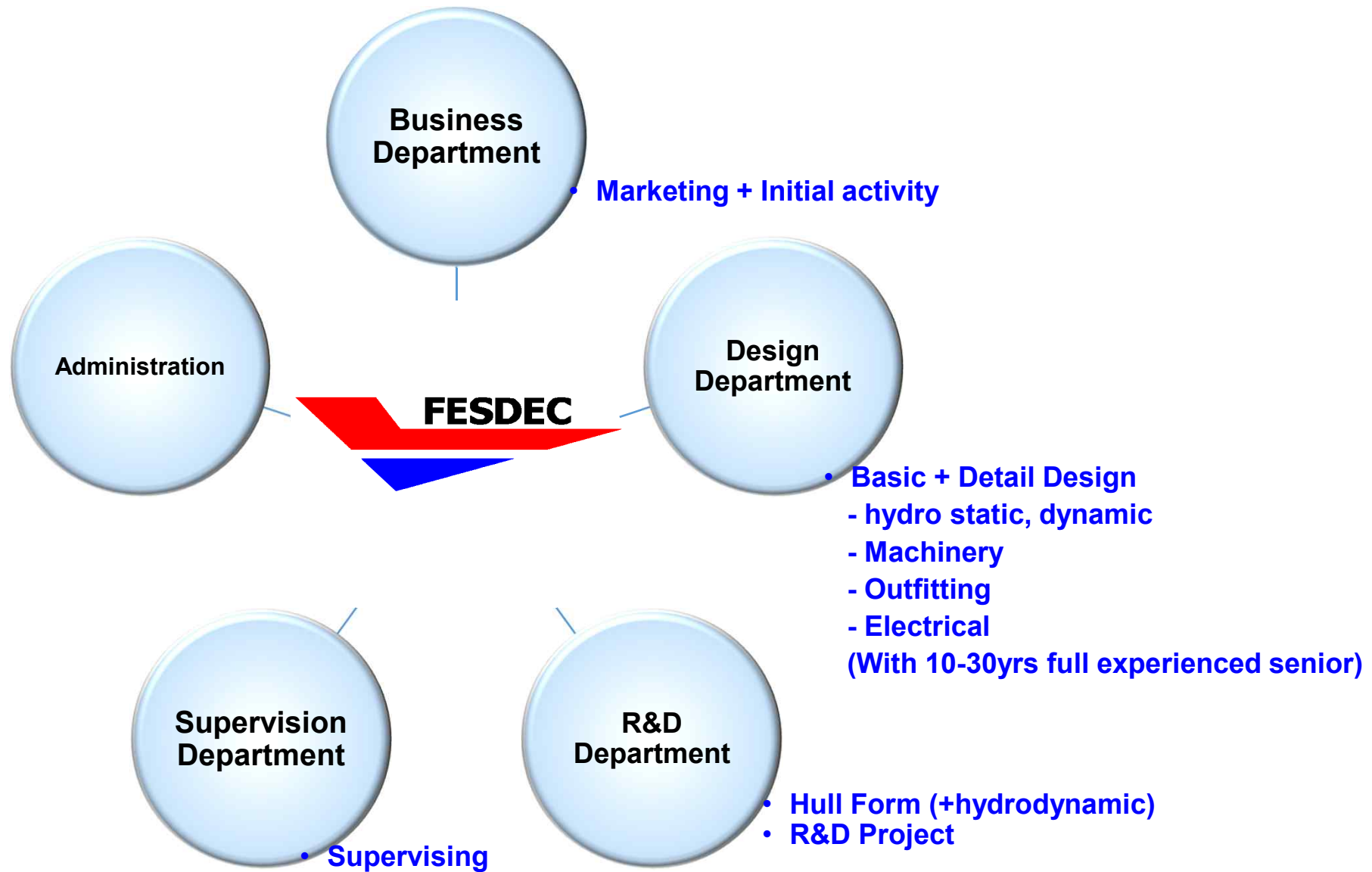
Optimum hull Form
Optimum Hull Design
Energy Saving Device

Bulk Carrier
36K • 38K

Tanker
50K • 34.5K • 24K

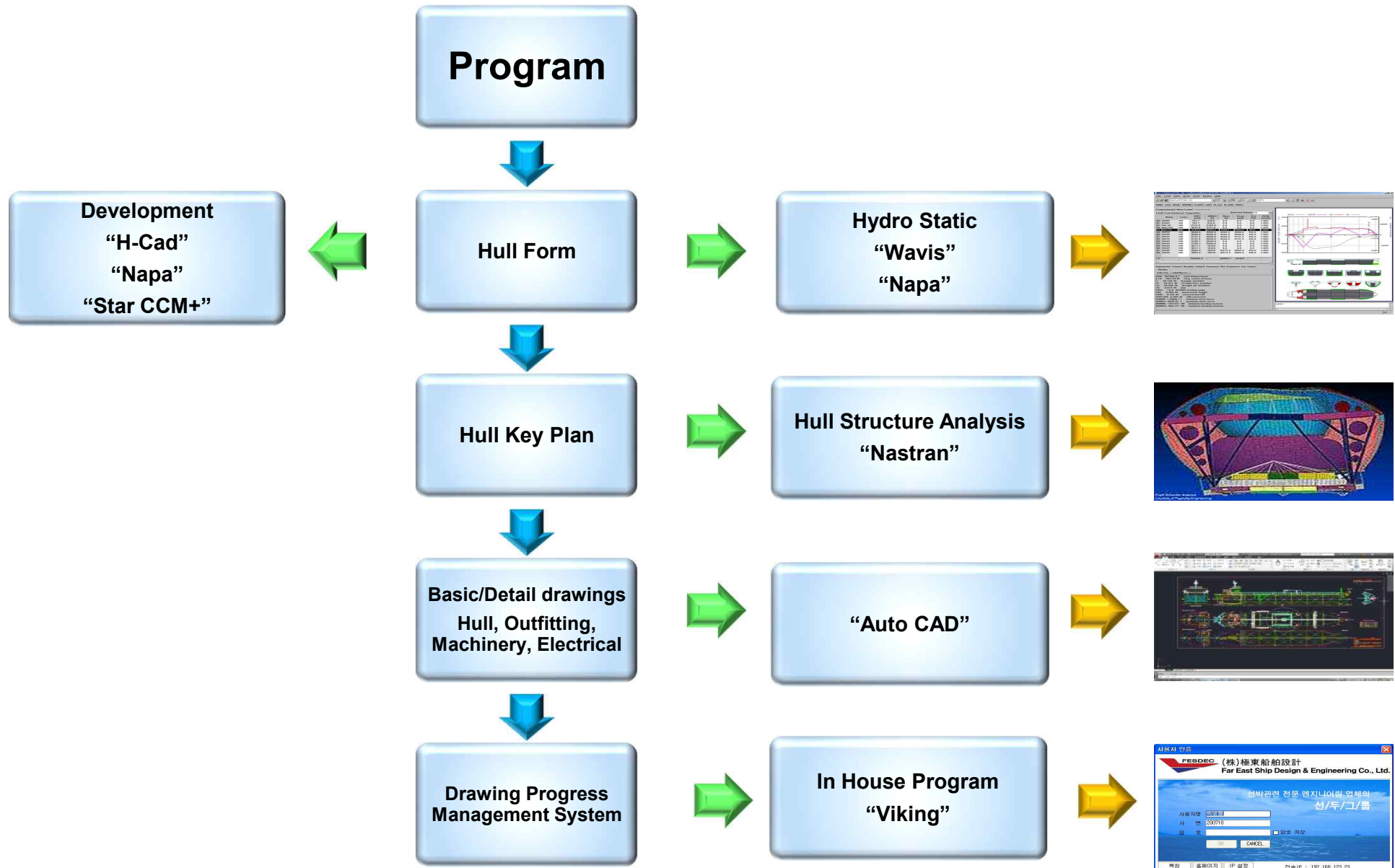
Underdevelopment
17K Tanker • 13K Tanker
64K bulk carrier
1000 TEU Container
LNG Fuel

2. ORGANIZATION



Total 35 Number of Members

3. DESIGN PROGRAM



4. REFERENCE OF FESDEC MAIN PRODUCT

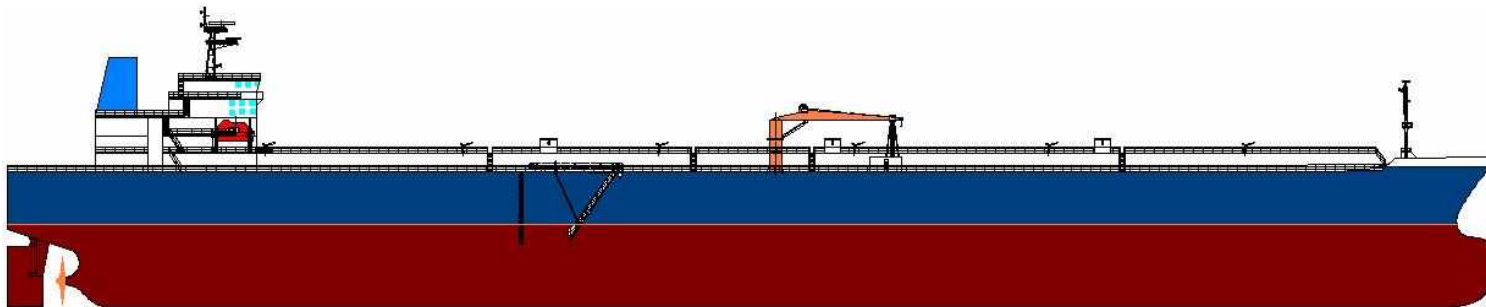
4.1 TANKER

NO.	TYPE OF VESSEL	DESIGN STATUS	REMARK
1	110 K CRUDE / PC	UNDER DEVELOPMENT	CSR
2	73.5 K CRUDE / PC	DESIGN COMPLETED AND SHIP ON SAILING	CSR
3	55K OIL / CHEM	DESIGN IN PROCESS	HCSR
4	50.0 K CRUDE / PC	DESIGN COMPLETED AND SHIP ON SAILING	CSR
5	50.0 K OIL / CHEM	DESIGN COMPLETED AND SHIP ON SAILING	CSR
6	34.5 K OIL / CHEM	DESIGN COMPLETED	CSR
7	30.0 K PRODUCT OIL	DESIGN COMPLETED AND SHIP ON SAILING	CSR
8	25.0 K OIL / CHEM	DESIGN COMPLETED AND SHIP ON SAILING	
9	24.0 K OIL / CHEM	DESIGN COMPLETED	
10	17.0 K OIL / CHEM	DESIGN COMPLETED AND SHIP ON SAILING	
11	13.0 K OIL / CHEM	DESIGN COMPLETED AND SHIP ON SAILING	
12	12.8 K OIL / CHEM	DESIGN COMPLETED AND SHIP ON SAILING	
13	12.0 K OIL / CHEM	DESIGN COMPLETED AND SHIP ON SAILING	
14	11.0 K OIL / CHEM	DESIGN COMPLETED AND SHIP ON SAILING	
15	10.8 K OIL / CHEM	DESIGN COMPLETED AND SHIP ON SAILING	
16	8.0 K OIL / CHEM	DESIGN COMPLETED AND SHIP ON SAILING	
17	7.8 K OIL / CHEM	DESIGN COMPLETED AND SHIP ON SAILING	
18	6.6K OIL / CHEM	DESIGN COMPLETED	
19	6.5 K OIL / CHEM	DESIGN COMPLETED AND SHIP ON SAILING	

4. REFERENCE OF FESDEC MAIN PRODUCT

4.1 TANKER

NO.	TYPE OF VESSEL	DESIGN STATUS	REMARK
20	6.3 K CRUDE / PC	DESIGN COMPLETED AND SHIP ON SAILING	
21	5.6 K OIL / CHEM	DESIGN COMPLETED AND SHIP ON SAILING	
22	5.5 K BUNKERING	DESIGN COMPLETED AND SHIP ON SAILING	
23	4.7 K BUNKERING	DESIGN COMPLETED	
24	3.5 K BUNKERING	DESIGN COMPLETED	
25	3.6 K MOLTEN SULPHUR CARRIER	DESIGN IN PROGRESS	
26	3.5 K OIL / CHEM	DESIGN COMPLETED AND SHIP ON SAILING	
27	3.4 K OIL / CHEM	DESIGN COMPLETED AND SHIP ON SAILING	
28	3.0 K OIL / CHEM	DESIGN COMPLETED AND SHIP ON SAILING	



4. REFERENCE OF FESDEC MAIN PRODUCT

4.1 TANKER



* M/V DUBAI STAR



Significant Ships of 2007

A selection of Newbuildings included in this year's volume of Significant Ships:

- Tembek - Samsung-built 216,000m3 LNG carrier - first of several Q-flex ships from Korea.
- Fram - combined expedition and Hurtigruten ship from Fincantieri.
- Orange Trident - first new-design 78,000dwt bulk carrier from Sanoyas.
- Star - Tallink's fast cruise-ferry from Aker Yards.
- Deo Volente - multipurpose heavy-lift ship from Conoship group.
- Yacht Express - a semi-submersible heavy load carrier from Yantai Raffles.
- Natchan Rera - Incat's largest catamaran delivered to a Japanese owner.
- Histria Giada - Romanian-built 40,000dwt product tanker delivery
- **Dubai Star - a 50,100dwt product tanker from Korean newcomer SPP.**
- Hoegh Delhi - a 7000-unit car carrier from Uljanik Shipyard.
- British Emerald - a 155,000m3 dual-fuel diesel-electric LNG carrier from Hyundai's Ulsan yard.

DESIGNER : FESDEC

BUILDER : SPP SHIPBUILDING

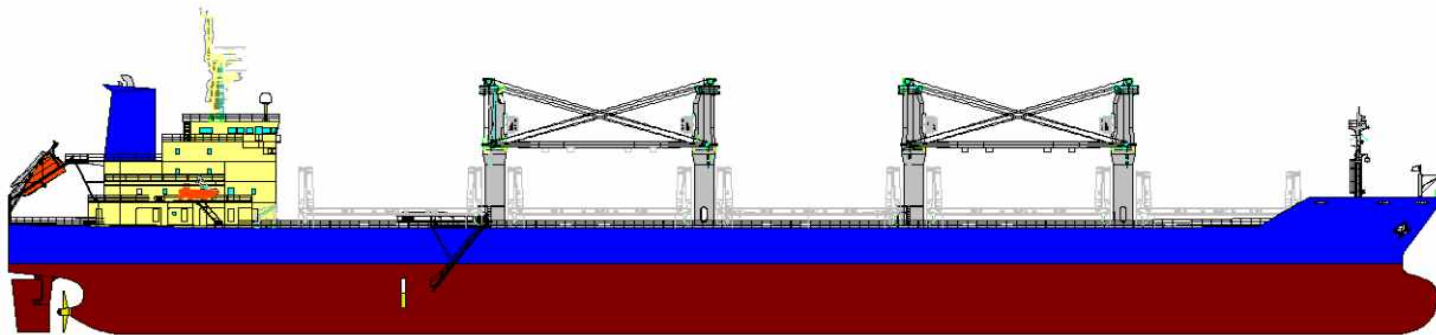
50K PC TANKER

**SIGNIFICANT SHIPS OF THE YEAR 2007
BY NAVAL ARCHITECTS**

4. REFERENCE OF FESDEC MAIN PRODUCT

4.2 BULK CARRIER

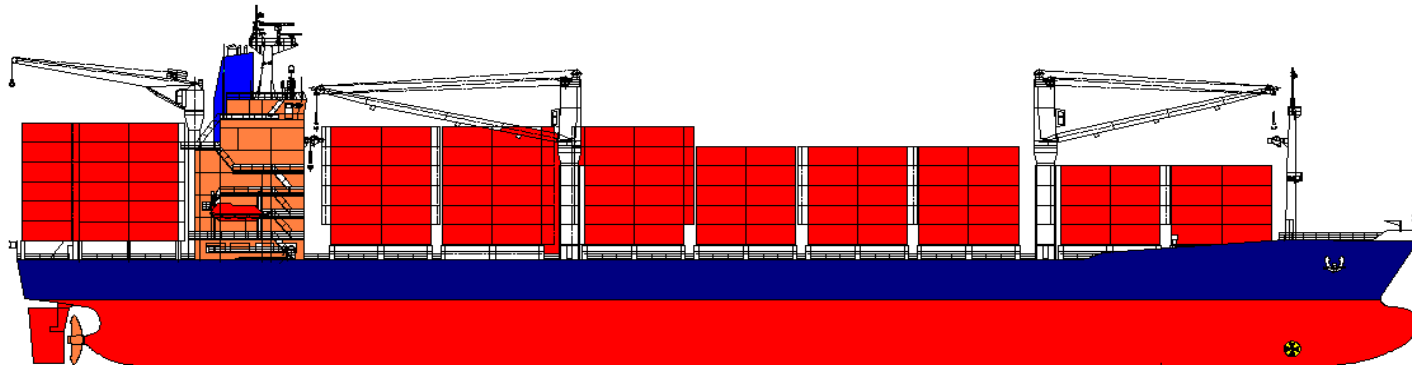
NO.	TYPE OF VESSEL	DESIGN STATUS	REMARK
1	81.0 K	DESIGN COMPLETED SHIP ON SAILING	CSR
2	58.0 K	DESIGN COMPLETED SHIP ON SAILING	CSR
3	56.0 K	UNDER DEVELOPMENT	CSR
4	38.0K	DESIGN COMPLETED	CSR
5	36.0 K	DESIGN COMPLETED AND UNDER CONSTRUCTION	CSR
6	34.0 K	DESIGN COMPLETED AND SHIP ON SAILING	CSR
7	32.0 K	DESIGN COMPLETED	CSR, DOUBLE HULL
8	18.0 K	DESIGN COMPLETED	
9	7.2 K	DESIGN COMPLETED AND SHIP ON SAILING	
10	6.5 K	DESIGN COMPLETED AND SHIP ON SAILING	
11	2.6 K	DESIGN COMPLETED AND SHIP ON SAILING	



4. REFERENCE OF FESDEC MAIN PRODUCT

4.3 CONTAINER CARRIER

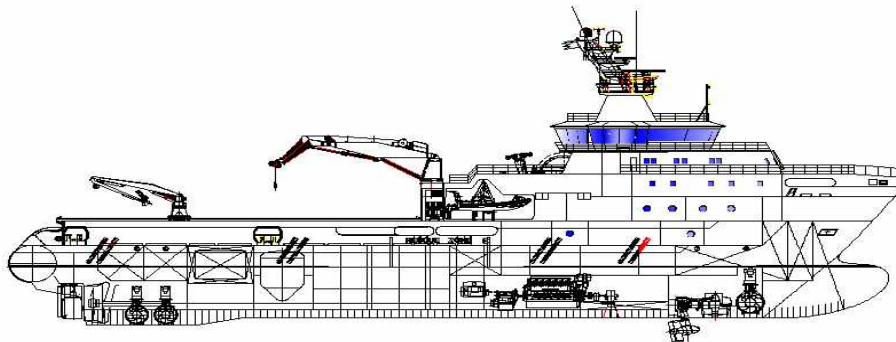
NO.	TYPE OF VESSEL	DESIGN STATUS	REMARK
1	18,000 TEU	DESIGN COMPLETED	G.E
2	14,000 TEU	UNDER DEVELOPMENT	G.E
3	2,800 TEU	UNDER DEVELOPMENT	G.E
4	4,800 TEU	UNDER DEVELOPMENT	
5	1,700 TEU	UNDER DEVELOPMENT	
6	1,100 TEU	DESIGN COMPLETED	
7	950 TEU	DESIGN COMPLETED	



4. REFERENCE OF FESDEC MAIN PRODUCT

4.4 SPECIAL PURPOSE VESSEL

NO.	TYPE OF VESSEL	DESIGN STATUS	REMARK
1	160M LPG FUELED ROPAX	DESIGN IN PROCESS	
2	AHTS (UT 786 CD TYPE)	DESIGN COMPLETED AND ON SAILING	
3	HEAVY CARGO CARRIER (12.3 DWT)	DESIGN COMPLETED AND ON SAILING	
4	POWER PLANT BARGE(60MW)	DESIGN COMPLETED	
5	POWER PLANT BARGE(80MW)	DESIGN COMPLETED	
6	OIL RECOVERY VESSEL	DESIGN COMPLETED AND ON SAILING	
7	FIRE FIGHTING VESSEL	DESIGN COMPLETED AND ON SAILING	
8	FISHING PETROL VESSEL	DESIGN COMPLETED AND ON SAILING	
9	HOSPITAL VESSEL	DESIGN COMPLETED AND ON SAILING	
10	OCEANOGRAPHIC RESEARCH VESSEL	DESIGN COMPLETED AND ON SAILING	
11	PATROL BOAT	DESIGN COMPLETED	
12	TUG BOAT (4800PS / 4500PS / 2900PS)	DESIGN COMPLETED AND ON SAILING	



4. REFERENCE OF FESDEC MAIN PRODUCT

4.5 GAS CARRIER

NO.	TYPE OF VESSEL	DESIGN STATUS	REMARK
1	3.5 K LPG TANKER	UNDER DEVELOPMENT	

4.6 FISHING VESSEL

NO.	TYPE OF VESSEL	DESIGN STATUS	REMARK
1	STERN TRAWLER	DESIGN COMPLETED AND ON SAILING	
2	TUNA LONG LINER (new)	DESIGN COMPLETED	GOVERNMENT R&D

4.7 R&D PROJECT

NO.	TYPE OF VESSEL	DESIGN STATUS	REMARK
1	WORLDWIDE PSV	DESIGN COMPLETED	GOVERNMENT
2	ARcTIC PSV	DESIGN COMPLETED	GOVERNMENT
3	OPTIMIZED MEDIUM VESSEL	UNDER DEVELOPMENT	GOVERNMENT
4	LNG FUEL 50K TANKER	UNDER DEVELOPMENT	GOVERNMENT
5	FISHING BOAT MODERNIZATION	UNDER DEVELOPMENT	GOVERNMENT



FESDEC

(주) 극 동 선 박 설 계

Far East Ship Design & Engineering Co., Ltd.

Contact Point :

E – Mail : fareast@shiptech.co.kr

Telephone : +82-51-320-3114(ref)

Facsimile : +82-51-329-7675

Home Page : <http://www.shiptech.co.kr>